

Innovative Food System Solution (IFSS) PORTAL

<http://IFSSportal.nutritionconnect.org>



Explore
Innovative
Solutions



Find
Funding
&
Investors



Move
Towards
Action
for
Impact



Discover
Events
&
Opportunities

As a global community, we urgently need to recreate our food systems to ensure both human and planetary health. **The Innovative Food System Solution (IFSS) portal aims to spotlight innovative solutions that tackle reducing malnutrition and restore & protect the environment in an equitable way.**

Through the IFSS portal key actors across the food supply chain - entrepreneurs, food producers, researchers, policy makers, businesses, students, NGOs, investors, and others - can explore food system solutions, connect with funding, identify high-potential investments, learn about upcoming events and opportunities, and find resources and tools that move innovative solutions towards uptake for major impact.

Solutions included in the portal (100+) span the food supply chain and include policies, technologies, nature-based solutions, public/private collaborations, financial solutions, education, and social equity approaches. Solution "profiles" are strengthened by concrete examples (projects, businesses, policies, etc.) in specific real-world settings, (with an emphasis on vulnerable communities and LMICs).

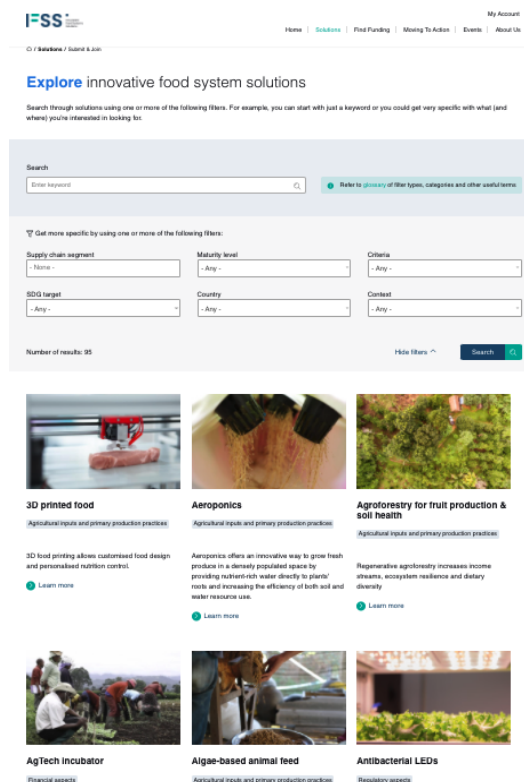
How It Started: A Collaborative Effort

The portal initiative is an ongoing open collaboration between groups working at the intersection of nutrition, sustainable agriculture, development economics, policy studies and environmental health. The initial portal content comes from research projects coordinated by the [the Global Alliance for Improved Nutrition \(GAIN\)/the Alliance of Bioversity-CIAT/EAT](#), [CSIRO's Food Systems and Global Change group](#), and [the Cornell Atkinson Center for Sustainability](#).

Building on interest and momentum leading up to the UN Food System Summit and other global initiatives in 2021, the portal rises to the challenge of bringing a wide range of key food system actors together around innovative solutions and meets the specific demand of helping to move ideas towards actions, with tools and resources to map out pathways to impact by 2030.

How It's Going: Functionalities and Resources

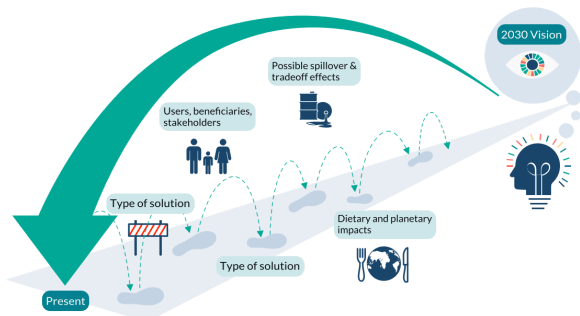
In May, the IFSS portal launched with an interactive interface that actively encourages new submissions of innovative solutions from around the world, and examples of existing solutions at work in real-world contexts.



The rich criteria filters and searchable content efficiently contextualize information based on what each user is interested in. This allows individuals and teams to evaluate "good fit" solutions and solution bundles - and possible funding matches - for actionable uptake of innovations to meet their priorities.

Moving Towards Action: *Tools and Inspiration*

Food system transformation requires urgent actions across many sectors. A wide range of content is included in this section of the IFSS portal to support actors across the food system in taking meaningful steps to help solutions gain traction in different ways.



The **Backcasting Pathway-to-Uptake builder** helps portal users to articulate a vision of major impact for a solution in 2030 and then will prompt them to 1) define key steps, 2) define important barriers, 3) suggest creative approaches/resolutions to those barriers, 4) ask for possible synergies with other solutions, and 5) identify critical enabling factors that need to be taken into account and at various points along the “pathway towards impact.” By highlighting solution bundles with “win-win” concepts, this tool allows users to explore solutions and prioritize problem solving while highlighting trade-offs between multiple criteria and impact targets.



Another tool included in the IFSS portal is a **guide for conducting a Delphi study** to help surface and assess solutions for a particular context. This guide can be used to build consensus when the goal is to gather the input and decisions from a structured group of people. Participants are guided through answering

multiple rounds of questions, and after each round, a facilitator helps to provide an anonymised summary version of all responses to all participants.

The IFSS portal will continue to build on these tools and resources to support and inspire the process of identifying innovative solutions in real-world contexts and then help to move towards action for impact to improve both planetary and dietary health for all.

Next Steps: *Strengthening Connections*

In the “year of summits” the portal provides a unique and inclusive public platform that helps link sectors to engage in exciting, actionable ways with each other to tackle pressing problems affecting us all.

As the IFSS portal grows, so does the amazing potential for connecting key food system actors to each other around game-changing innovations for positive transformations - in 2021 and beyond.

- Join the IFSS portal community [Linkedin page](#) to follow updates
- Share the portal with your networks to help grow the IFSS community around the world
- Get involved and learn more about how you and/or your institution can support portal activities

Additional collaborators and contributors are most welcome!

For more information, contact the IFSS portal Management Team

ifssportal@gainhealth.org